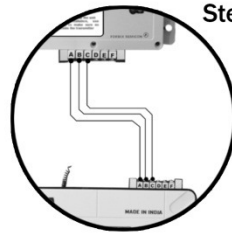
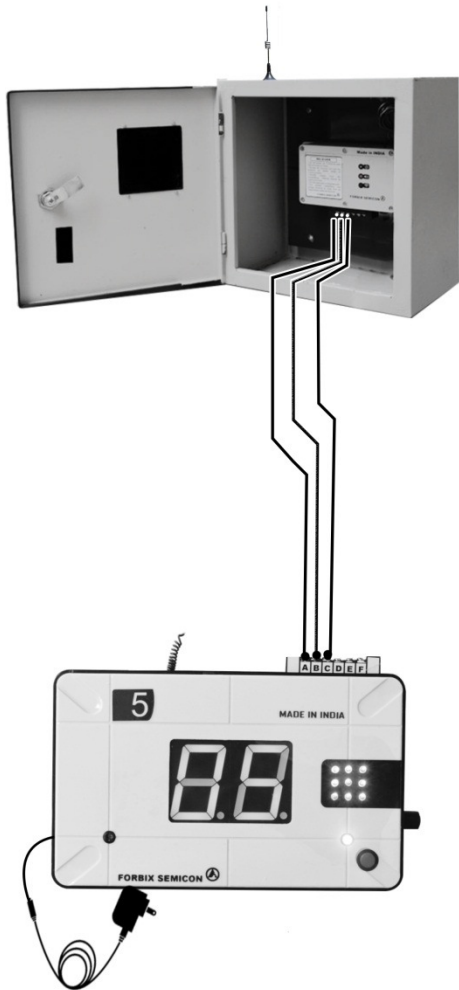


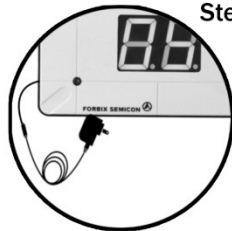
FBX7L02CM: 2-digit console display long range receiver

Technical specification



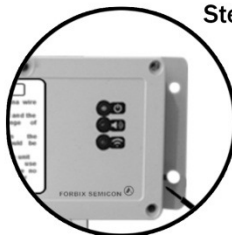
Step1

Make wire connection as shown



Step 2

Connect adaptor power supply



Step 3

Power (top) GREEN LED glows
Button (middle) RED LED is off
SYNC (bottom) LED blinks for 20sec



step 4

Displays the transmitter number

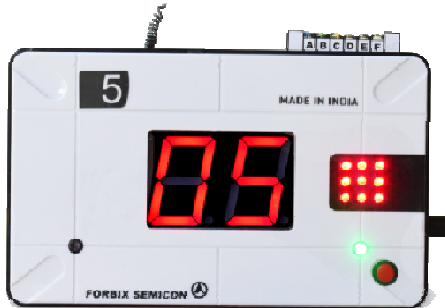
FORBIX SEMICON INDIA PVT. LTD.
Bangalore, India
Website: <https://www.forbixindia.com>
+91 9742370190 / +91 9742159846

FORBIX Osäühing,
Tallinn, Estonia
Website: <https://www.forbix.eu>
+372 880 1510

Email: sales@forbixindia.com

FBX7L02CM : 2-digit display receiver console

Technical specification



Possible display configurations:

00, 01, 02, 03, 99. Alphanumeric numbers also possible for 2/3/4 digit displays. Examples, A1, b2, c3, d4, E5, e5, F6, G7, HP01, i28, J452, L89, n02, P6, r412, t5, u58, U12, y8, 3012, 4569, 85A2, etc.

Receiver console station

Receiver console size: 240 x 165 x 45 mm
Display (each unit size) 48 x 65 mm
Weight: 450-580 gms (2 – 4 digits)

Model: FBX7L02CM

2-digit receiver display console

Features:

- Volume control knob to module beeping sound
- Number cancellation button
- Display self-check at power up
- (Customized design) to turn OFF indicator with short range wireless remote control

Technical details:

(unit does not contain radio receiver)

Wired connection to the receiver unit

Button on the unit to turn OFF the display

Operating voltage: (12V)

110-220VAC/50-60Hz to 12VDC converter adapter supplied.

Unit can also be plugged to any 12V external battery. Active working hours depends on the battery power

Receiver console

- 12 Volt DC (110-220VAC/50-60Hz) adapter supplied

Signal transmissions:

Make sure to press a button for at least 2-3 seconds for reliable transmission. This increases the range of communication

Application and features:

- Nurse call system for hospitals: remote with patients
- Steam bath sauna rooms / spas / restaurants etc.
- OPD token system for dispensaries: remote with doctors
- Office peon calling system: remote with clerk / manager
- Guest house attendant call unit: remote with customers in room
- Office peon calling, school peon calling system

FORBIX SEMICON INDIA PVT. LTD.

Bangalore, India

Website: <https://www.forbixindia.com>

+91 9742370190 / +91 9742159846

FORBIX Osühing,

Tallinn, Estonia

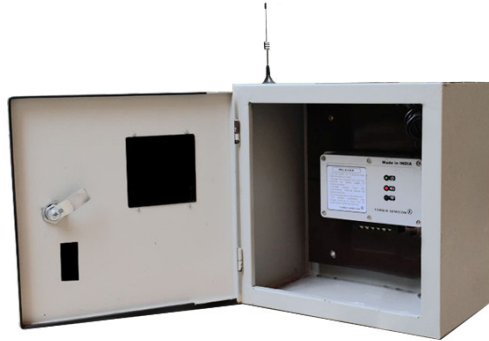
Website: <https://www.forbix.eu>

+372 880 1510

Email: sales@forbixindia.com

FBX7L02CM: Wireless long range receiver

Technical specification



Precautions and mounting locations:

- Mounted on the top of door / wall
- Easy mounting with 4 screws to secure it tightly
- IP65 enclosure unit, robust and weatherproof
- For indoor/outdoor purposes
- Keep away from metallic surroundings

Wall mount calling unit:

Enclosure type: IP 65 (color grey)
Size: 190 x 90 x 55 mm
Weight: 350gms

Operating voltage:

110-220VAC/50-60Hz to 12VDC converter adapter supplied.

Unit can also be plugged to any 12V external battery. Active working hours depends on the battery power.

FBX7L02CM

Long range receiver with metallic enclosure

Features:

- 1-port long range wireless receiver unit (in metallic enclosure)
- 1 indicator RED light in the front (corresponding to 1 port relay)
- 1 indicator BLUE SYNC light to check signal reception
- 1no. of 5Amps potential free relay contactor terminals
- Transmitter ON signal triggers the relay ON (indicator turns ON)
- Transmitter OFF signal triggers the relay OFF (indicator turns OFF)
- Long range (1-meter) wire / rubber duck antenna (+3dbi)
- Compatible with high power transmitters FBX7xx series

Technical details:

- Operating frequency: 380 – 480 MHz
- System works on signal hop mechanism. Reception happens at more than 12-15 predefined frequencies
- Modulation type: GFSK
- Radio IC: CC1100 (Chipcon/TI) and equivalents in sub-GHz freq.
- Receiver sensitivity: – 112 dbm
- Modulation: GFSK
- Data packet error correction mechanism: FEC

Wiring (diagram coding)

- [A]: Connector point should be connected to display [A]
- [B]: Connector point should be connected to display [B]
- [C]: Connector point should be connected to display [C]
- [D]: Internally connected to [A]
- [E]: Internally connected to [B]
- [F]: Internally connected to [C]

Signal reception:

Pressing alarm button on transmitter shows respective transmitter number on the display.

Relapsing the panic button on transmitter, disengages the display number

Application and features:

- Motor pump controllers
- Conveyer belts ON/OFF switch
- Panic alarm in buildings (in case of emergency)

FORBIX SEMICON INDIA PVT. LTD.

Bangalore, India

Website: <https://www.forbixindia.com>

+91 9742370190 / +91 9742159846

FORBIX Osäuhing,

Tallinn, Estonia

Website: <https://www.forbix.eu>

+372 880 1510

Email: sales@forbixindia.com